

6'-0" OVERALL
 19'-6 1/4" OVERALL
 6'-0" OVERALL

6'-0" TYPICAL ROOF OVERHANG

50'-0 1/4" OVERALL

6'-0"

TYPICAL ROOF EDGE ABOVE

ELECTRIC METER AND ENTRANCE

TYPICAL HEAVY TIMBER ROOF BRACKET

OFFICE

ELECTRIC PANEL

LAV.

ATIC SHUTTLE ABOVE

CHIMNEY

FURNACE

DISPLAY AREA

FORMER MENS WAITING RM.

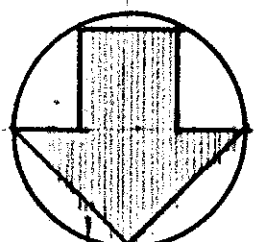
STATION AGENTS OFFICE

MAST

PROPERTY LINE

FLOOR PLAN

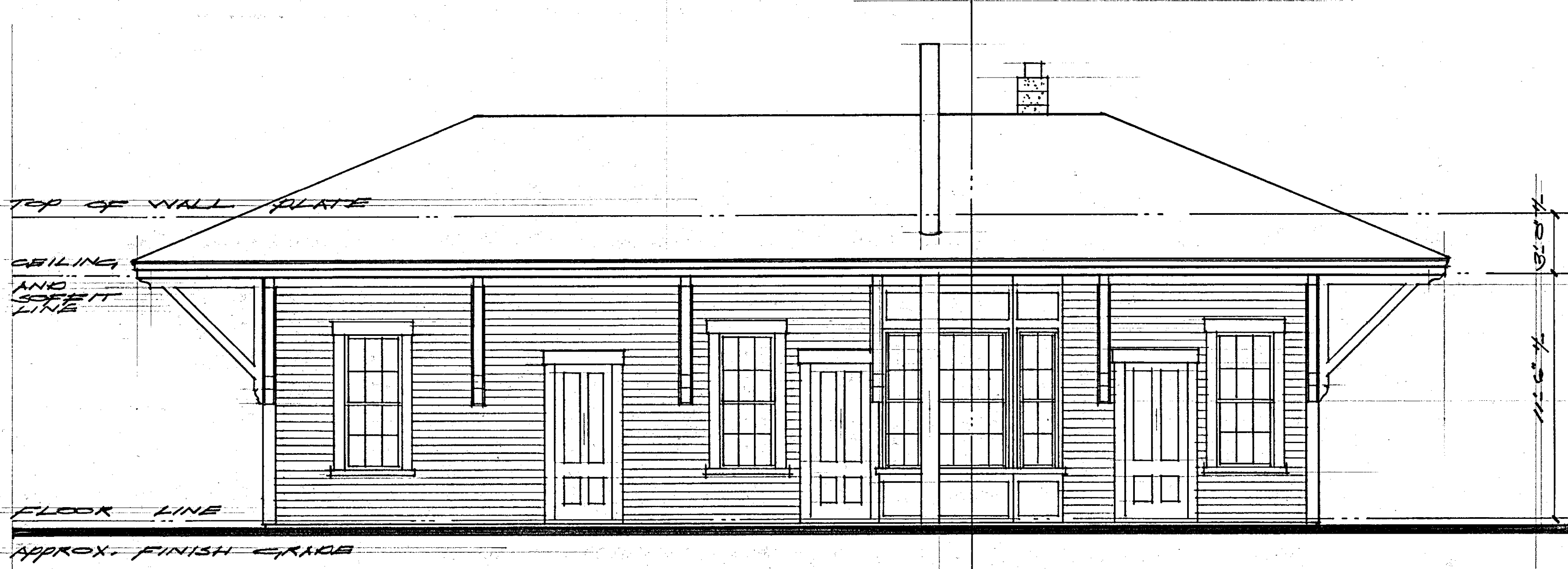
SCALE: 1/4" = 1'-0"



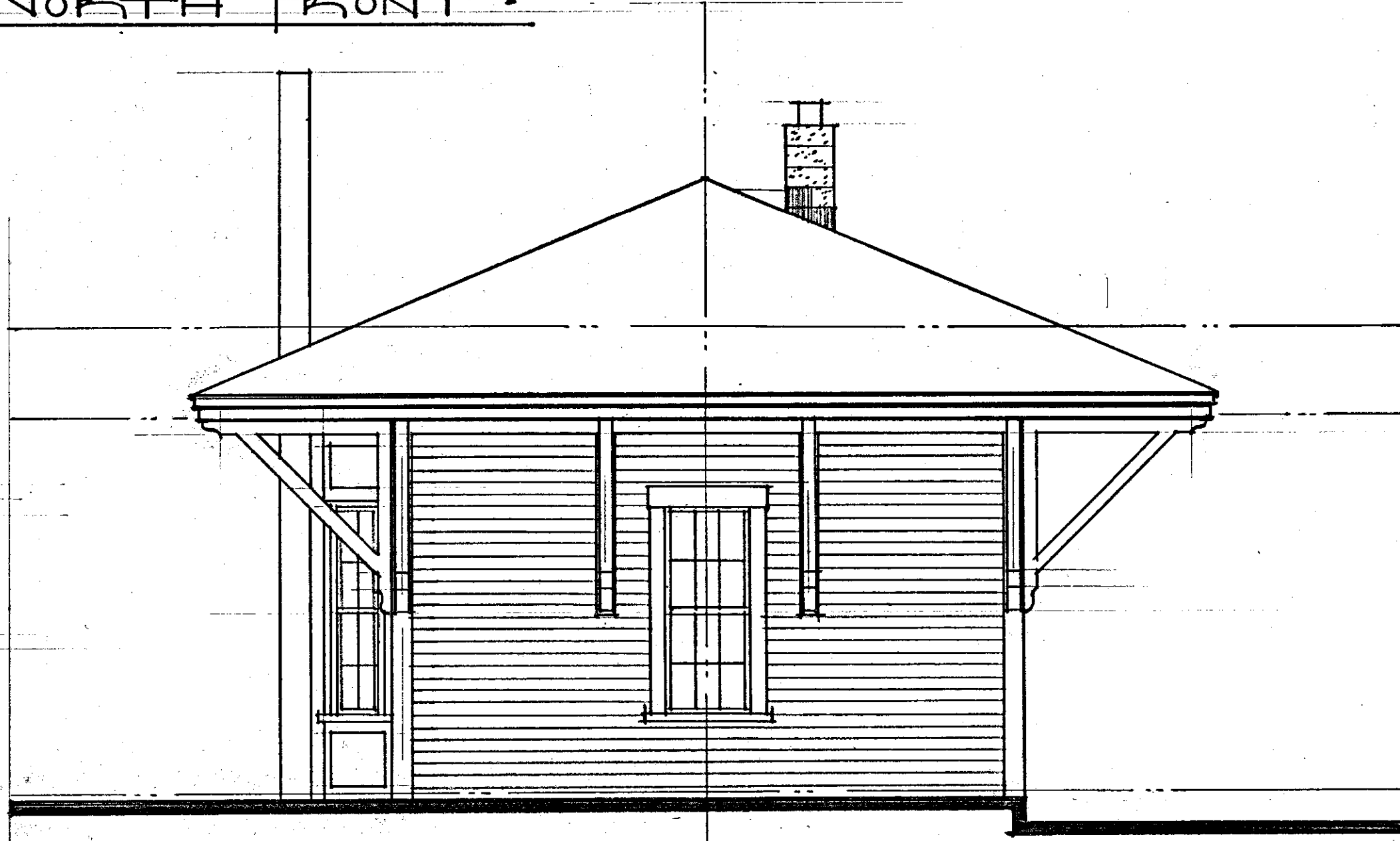
PROJECT NORTH

EXISTING CONDITIONS
 SANDOWN DEPOT - B&ARB
 SANDOWN, NEW HAMPSHIRE
 JUNE 1, 2016
 DRAWING 1 OF 3

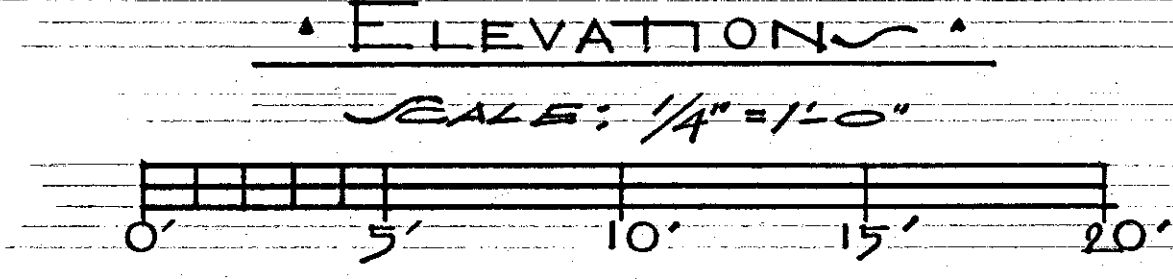
ba barrett architecture
 FRANK J. BARRETT, JR., A.I.A.
 P.O. Box 55 ■ White River Junction, Vermont 05001
 (802) 296-0004 ■ frank.j.barrett@verizon.net



• NORTH FRONT •



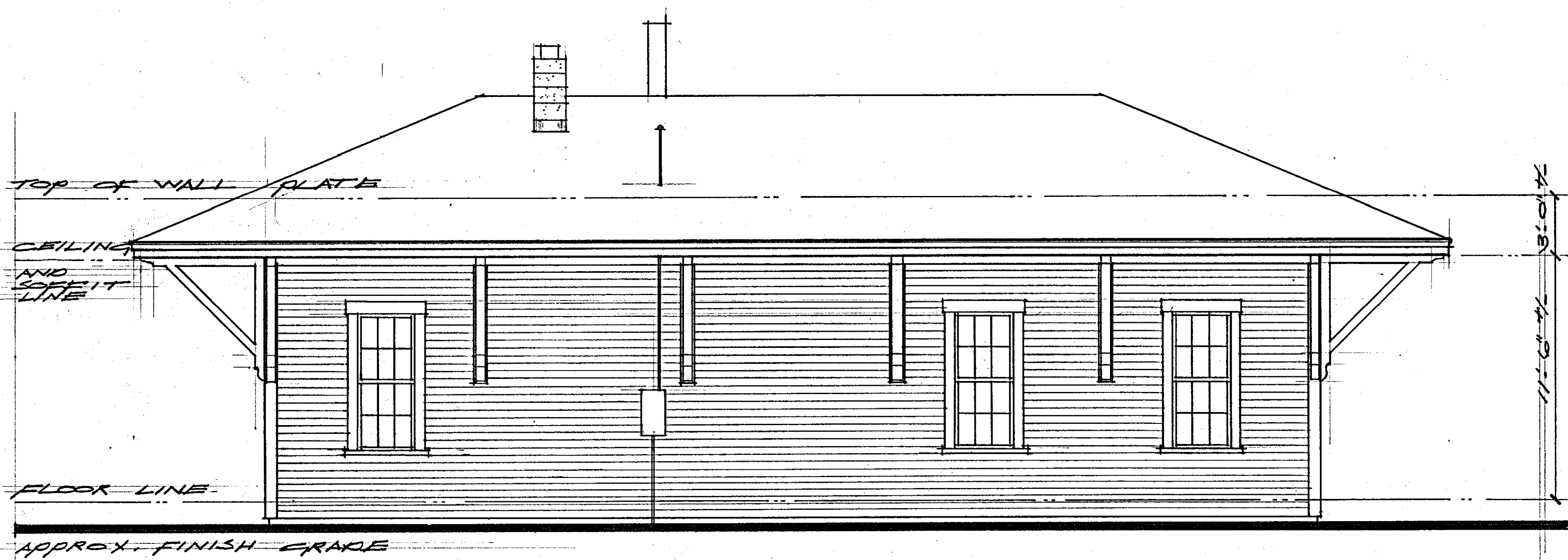
• WEST SIDE •



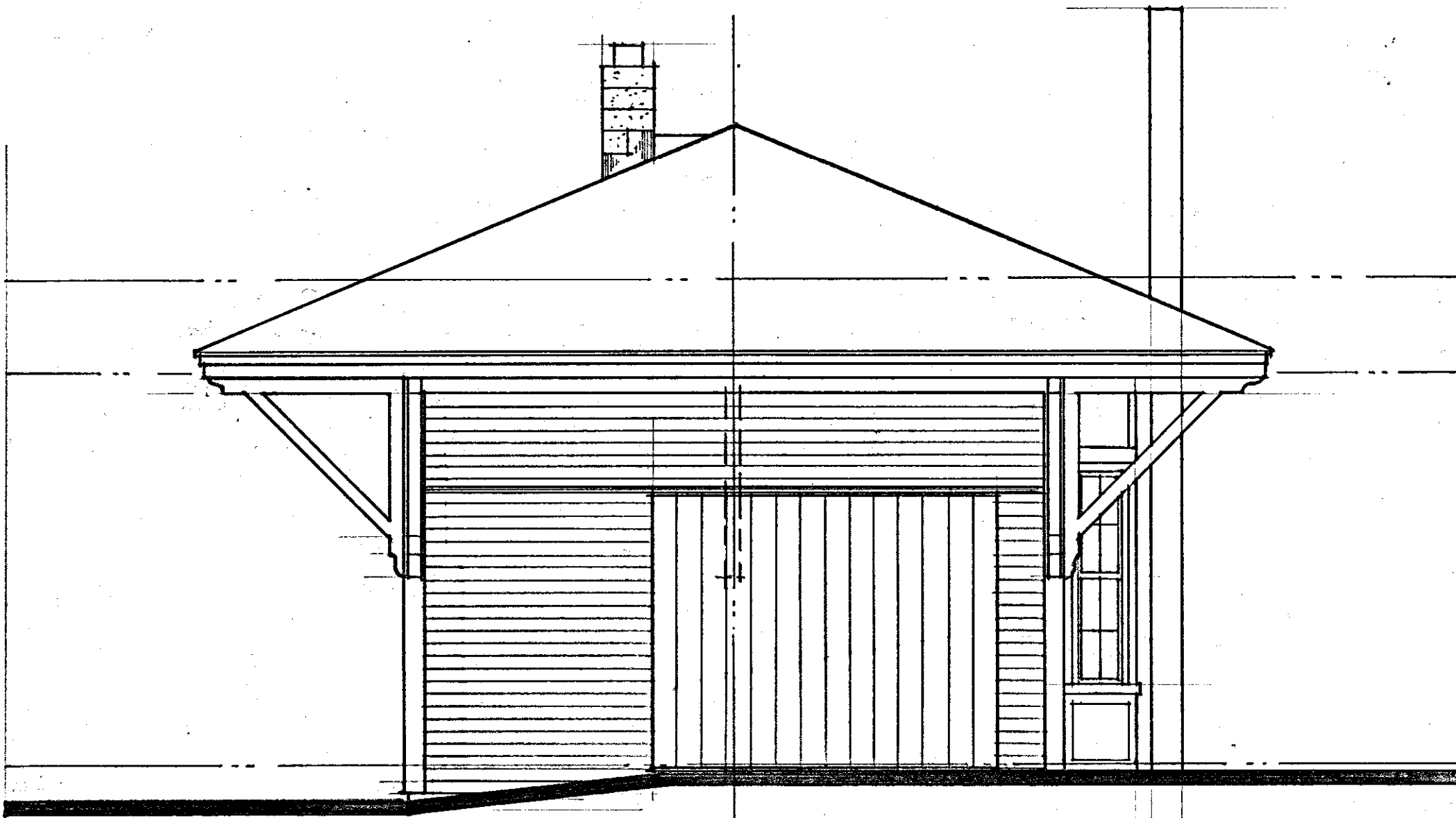
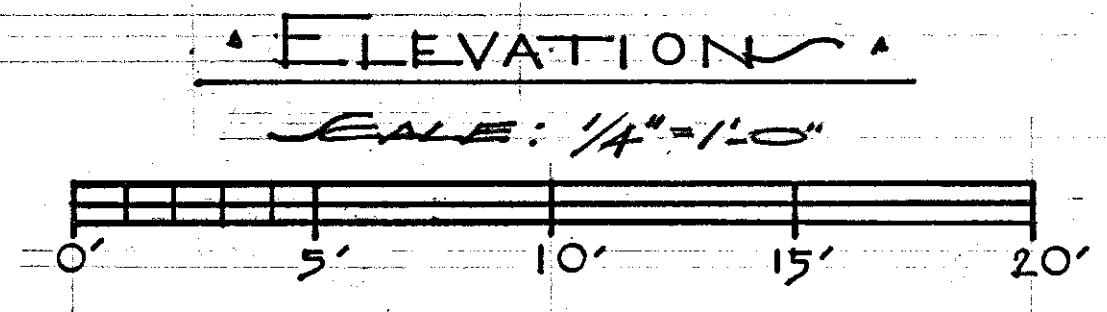
EXISTING CONDITIONS
 SANDOWN DEPOT - B&A/R/R
 SANDOWN, NEW HAMPSHIRE
 JUNE 1, 2016

DRAWING 2 OF 3

barrett architecture
 FRANK J. BARRETT, JR., A.I.A.
 P.O. Box 55 ■ White River Junction, Vermont 05001
 (802) 296-0004 ■ frank.j.barrett@verizon.net



• SOUTH REAR •



• EAST SIDE •

EXISTING CONDITIONS
 SANDOWN DEPOT - B&A/R
 SANDOWN, NEW HAMPSHIRE
 JUNE 1, 2016
 DRAWING 3 OF 3

ba barrett architecture
 FRANK J. BARRETT, JR., A.I.A.
 P.O. Box 55 ■ White River Junction, Vermont 05001
 (802) 296-0004 ■ frank.j.barrett@verizon.net